

CHRISTINE BRUNO
DISABILITY INCLUSION
CONSULTANT

BrunoDisabilityInclusion@gmail.com
347.201.2325

PROFILE

Internationally recognized leader in the field of disability equity and inclusion in the entertainment industry.

EXPERIENCE

DISABILITY CONSULTANT FOR ARTS & CULTURAL ORGANIZATIONS, GLOBAL — 2008-PRESENT

Liaison between decision makers and disabled acting community as expert casting and accessibility consultant. Facilitate large and small group workshops, trainings, conversations and breakout sessions; serve on task forces; deliver keynote addresses; moderate and participate in panel discussions, roundtables; develop language and resource guides; script consultation; write articles/essays for national publications; field press inquiries from national and international media outlets about issues of equity, diversity and inclusion for disabled artists.

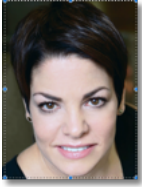
Organizations include: NYC Department of Cultural Affairs; Casting Society of America; Theatre Communications Group; Dance/NYC; NYC Mayors Office for People with Disabilities; Writers Guild of America, East; The Broadway League; ART/NY; SAG-AFTRA; AEA; Emerging Leaders of New York Arts (ELNYA); U.S. State Department; HandsOn; Fractured Atlas; New Jersey Theatre Alliance; New Jersey State Council on the Arts; Kennedy Center for the Performing Arts; Other Film Festival (Australia); University of Sydney; decibel Arts Festival (UK); DaDaFest (UK)

DISABILITY ADVOCATE, INCLUSION IN THE ARTS; NEW YORK, NY — 2005-2017

Served as liaison between decision makers and disabled acting community, accessibility consultant; developed language and resource guides; facilitated and conducted workshops; lead and participated in panel discussions, roundtables; script consulting, editing; wrote articles/essays for national publications; fielded press inquiries; copy edited all press releases, web copy, promotional material, grant applications, resource material, correspondence, all other relevant materials. 2011 Tony winner for Excellence in Theatre. Organization closed in December 2017.

FREELANCE DISABILITY CONSULTANT FOR THE CULTURAL PLAN, DEPT. OF CULTURAL AFFAIRS; NEW YORK, NY — 2016-17

Worked with DCLA and Hester Street Collaborative from planning to execution to ensure full inclusion of disability into the Plan. Advised on ADA-compliance, intentional inclusion; best practices; examined assumptions and history of exclusion; facilitated conversations with arts and disability thought leaders; organized meetings, focus groups, public forums; provided training materials; conducted outreach to a broad cross-section of disability communities; reviewed all internal and public materials; ensured accessibility of events; shared written insights, key findings with DCLA.



CHRISTINE BRUNO
DISABILITY INCLUSION
CONSULTANT

BrunoDisabilityInclusion@gmail.com
347.201.2325

TEACHING ARTIST; NEW YORK, NY — 2000-PRESENT

Teaching artist and consultant for various programs across NYC. Organizations include Queens Theatre, *Theatre for All*, NYC Kids Project, Visible Theatre

FREELANCE SCRIPT CONSULTANT; NEW YORK, NY — 1998-PRESENT

Script consultant for film scripts, stage plays with disability themes and/or disabled characters. Edit for messaging, content, technical accuracy, consistency; write synopses, evaluations; extensive copy editing, proofreading. Clients include The Kennedy Center, VSA, San Francisco Playhouse, Mixed Blood Theatre, Bluff City Films, Paloma Productions.

FREELANCE FEATURES WRITER / COPY EDITOR / ASSOCIATE PRODUCER; NEW YORK, NY — 1996-2011

Wrote, copy edited, proofread articles, layouts, documents for various NYC-based advertising, publishing, legal, and financial firms. Developed company style guide for disability-related website. Companies included The Nielsen Company, Underline Communications, Half the Planet.com. Clients included American Express, Verizon, Women & Co., *Airplay Monitor*, Ann Taylor, *Billboard* magazine, J. Crew, Leaders, *Lucky* magazine, Liz Claiborne, *Harper's Bazaar*, Polo/Ralph Lauren, *Scholastic*, Weight Watchers.

EDUCATION

MFA - Acting & Directing - Double Major
NEW SCHOOL FOR DRAMA - New York, NY
Princess Grace Nominee

BA - Theatre & Government - Double Major
SKIDMORE COLLEGE - Saratoga Springs, NY
Phi Beta Kappa

AFFILIATIONS

UNION AFFILIATIONS

SAG-AFTRA, Actors' Equity Association
SAG-AFTRA New York Local Board; Chair, SAG-AFTRA New York Local PWD Committee

MEMBERSHIPS

The Actors Studio, SAG-AFTRA PWD Task Force, Dance/NYC DDA Task Force, National SAG-AFTRA PWD Committee, Actors' Equity EEO Committee, New York Shakespeare Exchange, New Jersey Rep, Emerging Artists Theatre, Theatre Breaking Through Barriers, Writers Guild of America East Diversity Coalition

REFERENCES

Available upon request